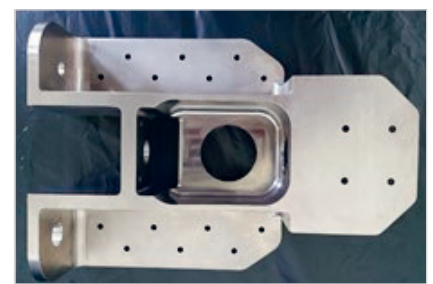
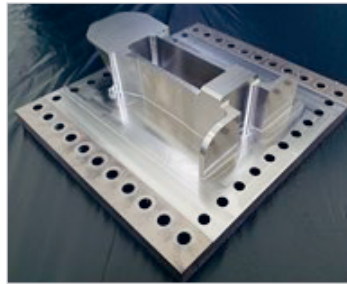
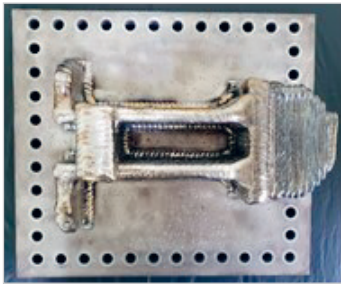


## AIRCRAFT - NACELLE / LATCH HOUSING



### INFORMATION ON THE COMPONENT PART

#### AIRBUS - A350 MODEL APPLICATION

- Nacelle System Components (Engine Structure)
- Component in Approval
- Customer: Collins Aerospace
- Class-1 Component: High Tensile Requirement

### BENEFIT

- Material Saving - "Conventional - 25Kg Vs "3D MP-3.50Kg"
- Machining Cycle Time Reduction
- Machining Tool Consumption Reduction
- Flexibility for Design Update

### TECHNICAL DATA




**Machine:**  
3D MP / arc405

**Material:**  
Ti6A14V / Wire

**Weight:**  
(Net): 1.10Kg

**Welded Vol:**  
3.50Kg

### ADVANTAGES OF 3DMP®

-  Material saving
-  Cost savings
-  Quick lead time